

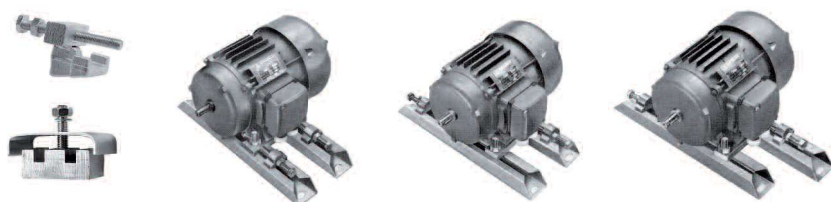
MOTOR BASES LINEA - TT



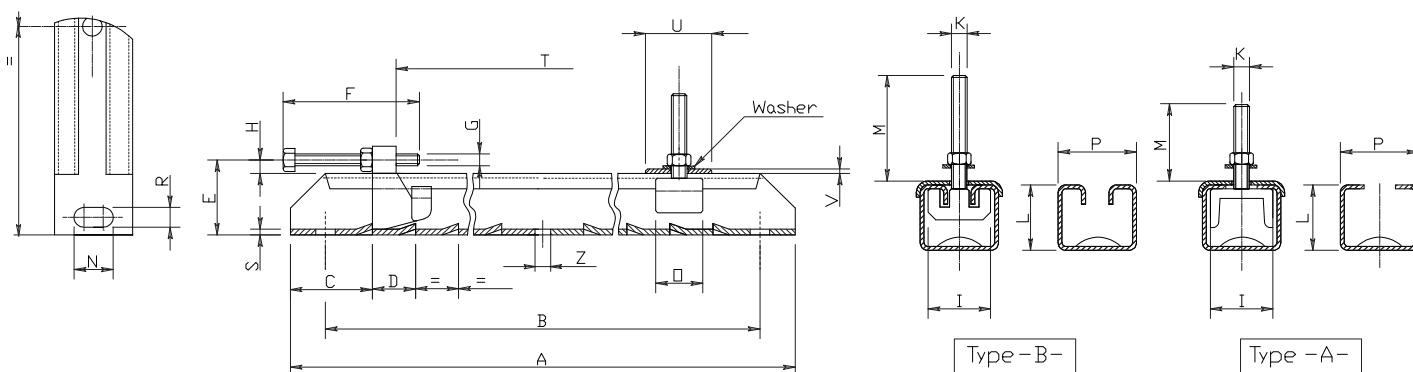
Description

This new range of universal motor bases "LINEA" (made of galvanized steel) allows the mounting and adjustment of all types of electric motors in almost all positions. In case of mounting upside-down, please consult our technical department. The very strong construction of the "LINEA" motor bases and the special fixing elements allow all types of combinations by the positioning of the adjusting threaded elements.

The mounting of the electric motors is made easy by a reduced number of standard components and by the correct keeping of position of the fixing element in the motor base. The "LINEA" motor bases may be fixed to their basement by means of bolts as well as by welding when the basement is steel made.



Part Number	TT 100/10
TT: motor bases Linea	
Size	



Stirrup Type	Motor Base Type	Motor	A [mm]	B [mm]	C [mm]	D [mm]	E [mm]	F [mm]	G [mm]	H [mm]	I [mm]	K [mm]	L [mm]	M [mm]	N [mm]	O [mm]	P [mm]	R [mm]	S [mm]	T [mm]	U [mm]	V [mm]	Z [mm]	Weight [kg]
Type A	TT71/6	56-71	312	280	50	30	38	80	M,8	7	40	M,6	31	25	18	22	47	13	3	180	35	2	-	2,4
	TT80/8	80	375	343	50	30	38	80	M,8	7	40	M,8	31	30	18	22	47	13	3	243	35	2	-	2,7
	TT90/8	80-90	395	355	54	40	45	100	M,10	9	50	M,8	36	35	21	25	59	13	3	247	40	2	-	4,3
	TT100/10	100	395	355	54	40	45	100	M,10	9	50	M,10	36	40	21	25	59	13	3	247	40	2	-	4,4
	TT112/10	100-112	495	455	54	40	45	100	M,10	9	50	M,10	36	40	21	25	59	13	3	347	40	2	-	5,2
Type B	TT132/10	100-132	530	480	60	40	52	120	M,12	12	50	M,10	40	45	26	20	65	17	4	360	60	3	-	7,8
	TT160/12	160	630	580	60	40	52	120	M,12	12	50	M,12	40	50	26	20	65	17	4	460	60	3	-	8,8
	TT180/12	160-180	700	630	70	40	57	120	M,12	15	50	M,12	42	50	26	20	75	17	4	524	80	3	-	12,0
	TT225/16	200-225	864	800	82	45	68	140	M,16	18	60	M,16	50	80	27	35	82	17	5	654	90	4	17	20,4
	TT280/20	250-280	1072	1000	86	45	90	150	M,18	22	90	M,20	70	85	27	35	116	20	6	842	120	4	20	43,0
	TT355/24	315-355	1330	1250	86	45	90	150	M,18	22	90	M,24	70	100	27	35	116	24	6	1090	120	4	25	52,0
	TT400/30	400	1430	1350	86	45	90	150	M,18	22	100	M,30	70	100	27	40	116	24	6	1190	120	4	25	58,0