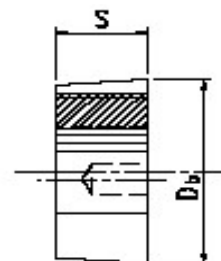
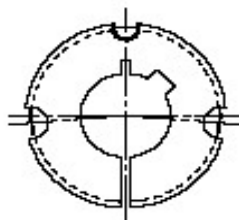
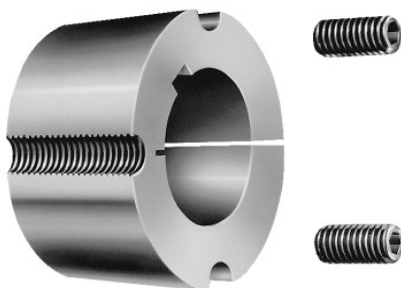


Kuželová upínací pouzdra

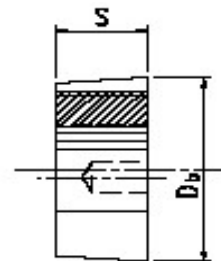
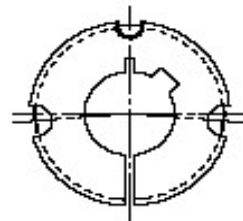
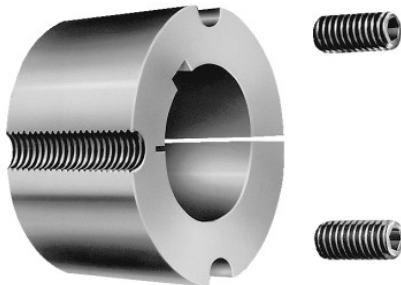
Pouzdra Taper Lock



METRICKÁ ŘADA							
Označení pouzdra	Průměr otvoru (mm)	S (mm)	Db (mm)	Počet šroubů	Rozměr šroubu	Velikost klíče	Utah. moment (Nm)
1008	10 - 11 - 12 - 14 - 15 - 16 - 18 - 19 - 20 22 - 24 - 25	22,30	35,00	2	1/4"x1/2"	3	5,5
1108	10 - 11 - 12 - 14 - 15 - 16 - 17 - 18 - 19 20 - 22 - 24 - 25 - 26 - 27 - 28	22,30	38,00	2	1/4"x1/2"	3	5,5
1210	11 - 12 - 14 - 15 - 16 - 18 - 19 - 20 - 22 24 - 25 - 26 - 28 - 30 - 32	25,40	47,00	2	3/8"x5/8"	5	20
1215	11 - 12 - 14 - 15 - 16 - 18 - 19 - 20 - 22 24 - 25 - 26 - 28 - 30 - 32	38,10	47,00	2	3/8"x5/8"	5	20
1310	14 - 16 - 18 - 19 - 20 - 22 - 24 - 25 - 28 30 - 32 - 35	25,40	52,00	2	3/8"x5/8"	5	20
1610	12 - 14 - 15 - 16 - 18 - 19 - 20 - 22 - 24 25 - 26 - 28 - 30 - 32 - 35 - 38 - 40 - 42	25,40	57,00	2	3/8"x5/8"	5	20
1615	12 - 14 - 15 - 16 - 18 - 19 - 20 - 22 - 24 25 - 26 - 28 - 30 - 32 - 35 - 38 - 40 - 42	38,10	57,00	2	3/8"x5/8"	5	20
2012	14 - 15 - 16 - 18 - 19 - 20 - 22 - 24 - 25 26 - 28 - 30 - 32 - 35 - 38 - 40 - 42 - 45 48 - 50	31,80	70,00	2	7/16"x7/8"	5	20
2517	16 - 18 - 19 - 20 - 22 - 24 - 25 - 28 - 30 32 - 35 - 38 - 40 - 42 - 45 - 48 - 50 - 55 60 - 65	44,50	85,00	2	1/2"x1"	6	50
3020	22 - 24 - 25 - 28 - 30 - 32 - 35 - 38 - 40 42 - 45 - 48 - 50 - 55 - 57 - 60 - 65 - 70 75	50,80	108,00	2	5/8"x1"1/4	8	90
3030	35 - 38 - 40 - 42 - 45 - 47 - 48 - 50 - 55 60 - 65 - 70 - 75	76,20	108,00	2	5/8"x1"1/4	8	90
3525	35 - 38 - 40 - 42 - 45 - 48 - 50 - 55 - 60 65 - 70 - 75 - 80 - 85 - 90	63,50	127,00	3	1/2"x1"1/2	10	115

Kuželová upínací pouzdra

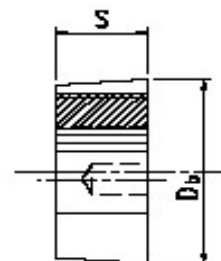
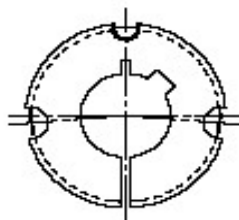
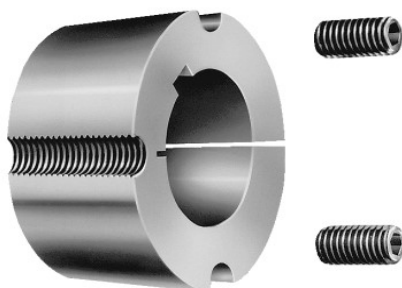
Pouzdra Taper Lock



METRICKÁ ŘADA							
Označení pouzdra	Průměr otvoru (mm)	S (mm)	Db (mm)	Počet šroubů	Rozměr šroubu	Velikost klíče	Utah. moment (Nm)
3535	35 - 38 - 40 - 42 - 45 - 48 - 50 - 55 60 - 65 - 70 - 75 - 80 - 85 - 90	88,90	127,00	3	1/2"x1 1/2"	10	115
4040	40 - 42 - 45 - 50 - 55 - 60 - 65 - 70 - 75 80 - 85 - 90 - 95 - 100	101,60	146,00	3	5/8"x1 1/4"	14	170
4545	55 - 60 - 65 - 70 - 75 - 80 - 85 - 90 - 95 100 - 105 - 110	114,30	162,00	3	1/4"x1 1/2"	14	195
5050	50 - 60 - 65 - 70 - 75 - 80 - 85 - 90 - 95 100 - 110 - 115 - 120 - 125	127,00	178,00	3	7/8"x2 1/4"	17	275

Kuželová upínací pouzdra

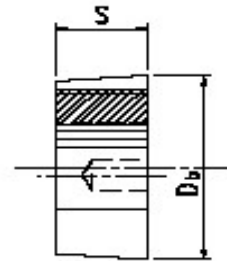
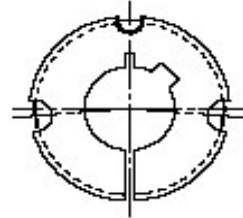
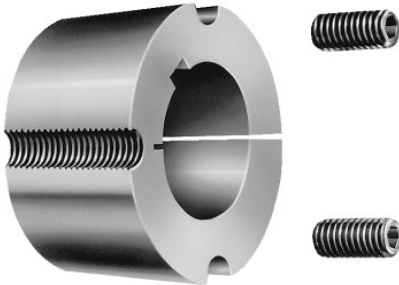
Pouzdra Taper Lock



PALCOVÁ ŘADA							
Označení pouzdra	Průměr otvoru (v palcích)	S (mm)	Db (mm)	Počet šroubů	Rozměr šroubu	Velikost klíče	Utah. moment (Nm)
1008	3/4" - 3/8" - 1/2" - 5/8" - 3/4" - 7/8" - 1"	22,30	35,00	2	1/4"x1/2"	3	5,5
1108	3/8" - 1/2" - 5/8" - 3/4" - 7/8" - 1" - 1"1/8"	22,30	38,00	2	1/4"x1/2"	3	5,5
1210	1/2" - 5/8" - 3/4" - 7/8" - 1" - 1"1/8" 1"1/4 - 1"1/2"	25,40	47,00	2	3/8"x5/8"	5	20
1215	1/2" - 5/8" - 3/4" - 7/8" - 1" - 1"1/8" 1"1/4"	38,10	47,00	2	3/8"x5/8"	5	20
1310	1/2" - 5/8" - 3/4" - 7/8" - 1" - 1"1/8" 1"1/4 - 1"3/8"	25,40	52,00	2	3/8"x5/8"	5	20
1610	3/8" - 1/2" - 5/8" - 3/4" - 7/8" - 1" 1"1/8 - 1"1/4 - 1"3/8 - 1"1/2 - 1"5/8"	25,40	57,00	2	3/8"x5/8"	5	20
1615	1/2" - 5/8" - 3/4" - 7/8" - 1" - 1"1/8" 1"1/4 - 1"3/8 - 1"1/2 - 1"5/8 - 1"3/4"	38,10	57,00	2	3/8"x5/8"	5	20
2012	5/8" - 3/4" - 7/8" - 1" - 1"1/8" - 1"1/4" 1"3/8 - 1"1/2 - 1"5/8 - 1"3/4 - 1"7/8 - 2" 3/4" - 7/8" - 1" - 1"1/8" - 1"1/4 - 1"3/8"	31,80	70,00	2	7/16"x7/8"	5	20
2517	1"1/2 - 1"5/8 - 1"3/4 - 1"7/8 - 2" - 2"1/8" 2"1/4 - 2"3/8 - 2"1/2"	44,50	85,00	2	1/2"x1"	6	50
3020	1"1/4 - 1"3/8 - 1"1/2 - 1"5/8 - 1"3/4" 1"7/8 - 2" - 2"1/8 - 2"1/4 - 2"3/8 - 2"1/2" 2"5/8 - 2"3/4 - 2"7/8 - 3"	50,80	108,00	2	5/8"x1"1/4"	8	90
3030	1"1/4 - 1"3/8 - 1"1/2 - 1"5/8 - 1"3/4" 1"7/8 - 2" - 2"1/8 - 2"1/4 - 2"3/8 - 2"1/2" 2"5/8 - 2"3/4 - 2"7/8 - 3"	76,20	108,00	2	5/8"x1"1/4"	8	90
3525	1"1/2 - 1"5/8 - 1"3/4 - 1"7/8 - 2" - 2"1/8" 2"1/4 - 2"3/8 - 2"1/2 - 2"5/8 - 2"3/4" 2"7/8 - 3" - 3"1/8 - 3"1/4 - 3"3/8 - 3"1/2"	63,50	127,00	3	1/2"x1"1/2"	10	115

Kuželová upínací pouzdra

Pouzdra Taper Lock



PALCOVÁ ŘADA							
Označení pouzdra	Průměr otvoru (v palcích)	S (mm)	Db (mm)	Počet šroubů	Rozměr šroubu	Velikost klíče	Utah. moment (Nm)
3535	1"1/2 - 1"5/8 - 1"3/4 - 1"7/8 - 2" - 2"1/8 2"1/4 - 2"3/8 - 2"1/2 - 2"5/8 - 2"3/4 2"7/8 - 3" - 3"1/8 - 3"1/4 - 3"3/8 - 3"1/2	88,90	127,00	3	1/2"x1"1/2	10	115
4040	1"3/4 - 2" - 2"3/4 - 3"1/2 - 3"3/4 - 4"	101,60	146,00	3	5/8"x1"1/4	14	170
4545	3" - 3"1/2 - 4"	114,30	162,00	3	1/4"x1"2"	14	195
5050	3"1/2 - 4"	127,00	178,00	3	7/8"x2"1/4	17	275